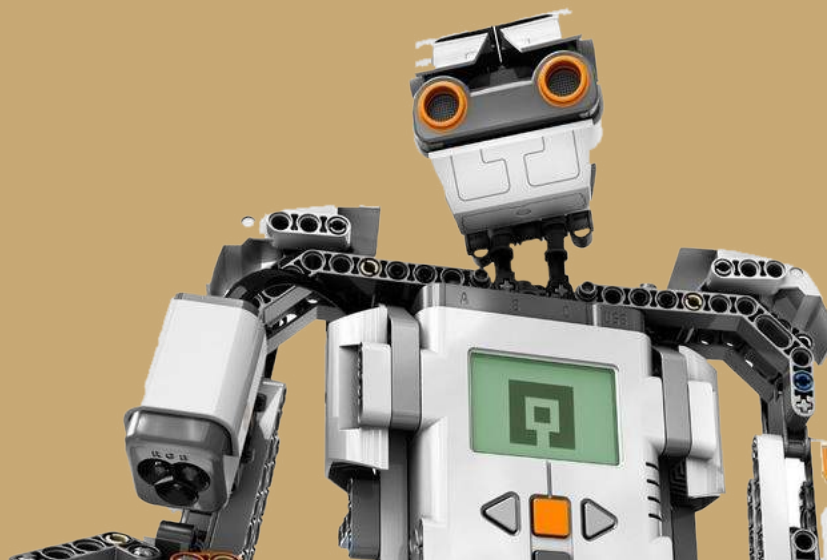


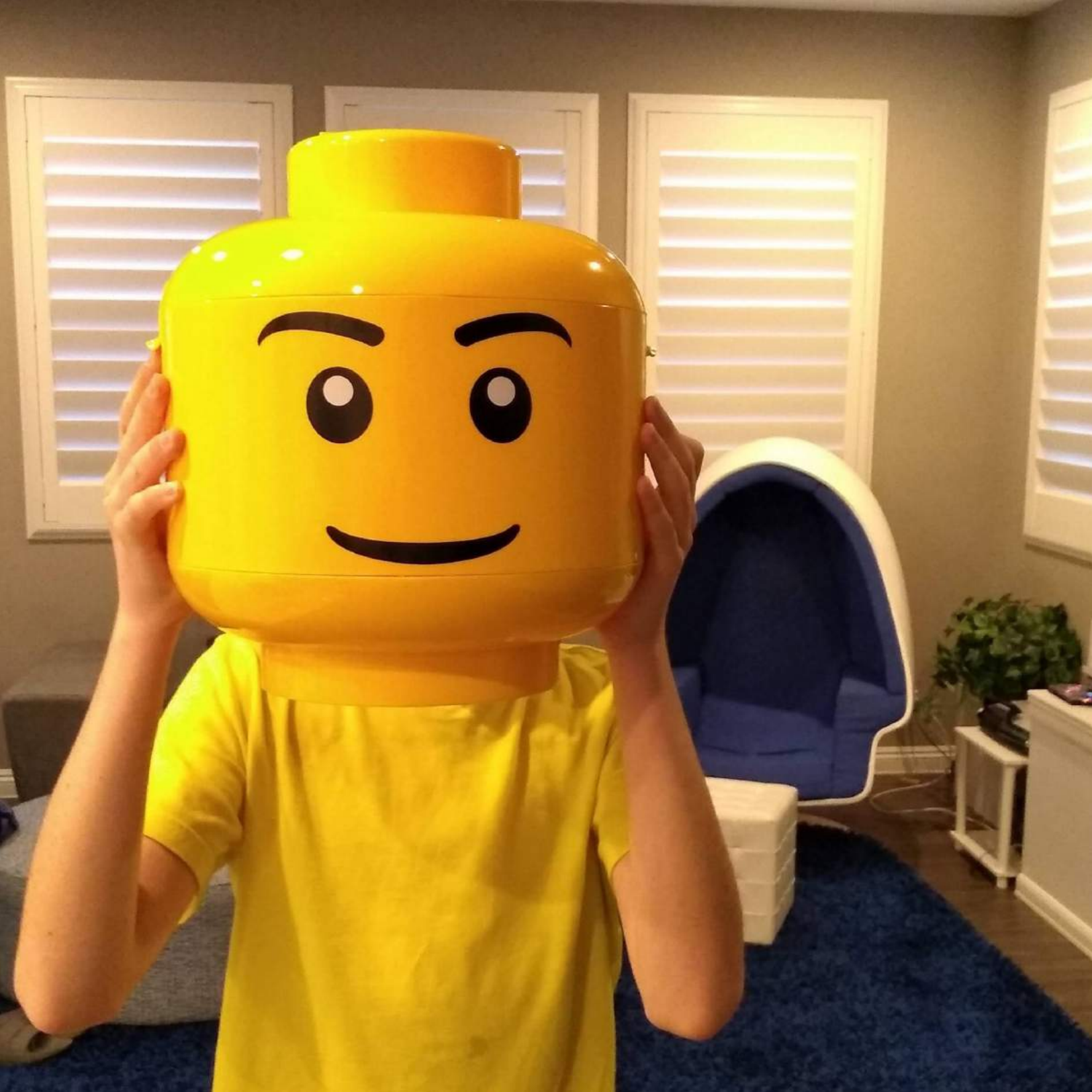


ST BEES SCHOOL

HOLIDAY PROGRAMME

ACTIVE-8 2023





WELCOME

Welcome to St Bees School Holiday Programme,
Where *STEAM meets LEGO* and where you *play more, learn better*.

ACTIVE-8 at St Bees is a one-of-a kind summer holiday programme. Merging STEAM (Science, Technology, Engineering, Arts & Maths) with LEGO; the programme has something for everyone.

Students will build their confidence, programme robots, learn coding and solve real-life problems both inside and outside the classroom.

Each day, they will overcome challenges and learn more about protecting our environment all while

Are you ready to make this a holiday to remember?

INGREDERE UT PROFICIAS

COMBINING STEAM + LEGO (+ THE ENVIRONMENT!)

Hear us out - they really do work together!

“Surely not compatible?” I hear you ask.

Here is why Lego is the way forward and links in perfectly with our established STEAM programme.

STEAM merges academia and Forest school together – Lego will give it the edge that no others have. This is all about a child-lead approach to learning. STEAM (Science, Technology, Engineering, Arts and Mathematics) focus means that our summer schools will develop children’s understanding and awareness in our world. And let’s face it - most children love Lego!

It should therefore be relatable for, and have impact on, children of both Eastern and Western backgrounds. Similarly, through this programme it is hoped that teaching the STEAM subjects using a more creative, engaging approach, these commonly unpopular areas will appear more appealing to children of all ages.

SAVE
THE





THE AIMS & OUTCOMES

We want children to develop an awareness of the natural world and their environmental impact while enjoying every single second.

Through specialist academic tuition of the core STEAM subjects (Science, Technology, Engineering, Arts and Mathematics) and the Lego project, children will participate in enjoyable learning experiences, while the key learning outcomes are skilfully extracted and highlighted throughout.

Children will be continuously exposed to new learning experiences which require independence and an ability to cooperate and communicate effectively with a team. There will also consequently be ongoing development of children's social and emotional skills, with guidance on how they could express themselves more effectively and participate most successfully in all activities. There will be great emphasis on children's interpersonal skills and communication, which will, in turn, enhance their vocabulary and understanding of the English language, along with their constant immersion in English culture.

We strive to demonstrate the incredible impact which learning in a more child-led, enquiry based environment can have and the progression in children's self-esteem, confidence and independence. We hope to demonstrate this utilising self, peer and teacher assessment tools throughout the programme.

Our ultimate aim is for children to not only develop socially and academically, but for children to engage in fun, stimulating activities which will provide a different insight into education for children of both eastern and western heritage. We are sure children will enjoy their time with us and we hope they endeavour to maintain links with St. Bees and return for future programmes.

LEGO IN EDUCATION

Yes, LEGO is fun. It is engaging. It is stimulating. It is for boys and for girls. Young and older. But is it educational? Surprisingly... a lot more so than you might think...

The Lego Education brand has been working with educators for over three decades to develop experiences in the classroom that bring learning concepts to life. We have identified eight key benefits of creating, configuring and crafting with Lego.

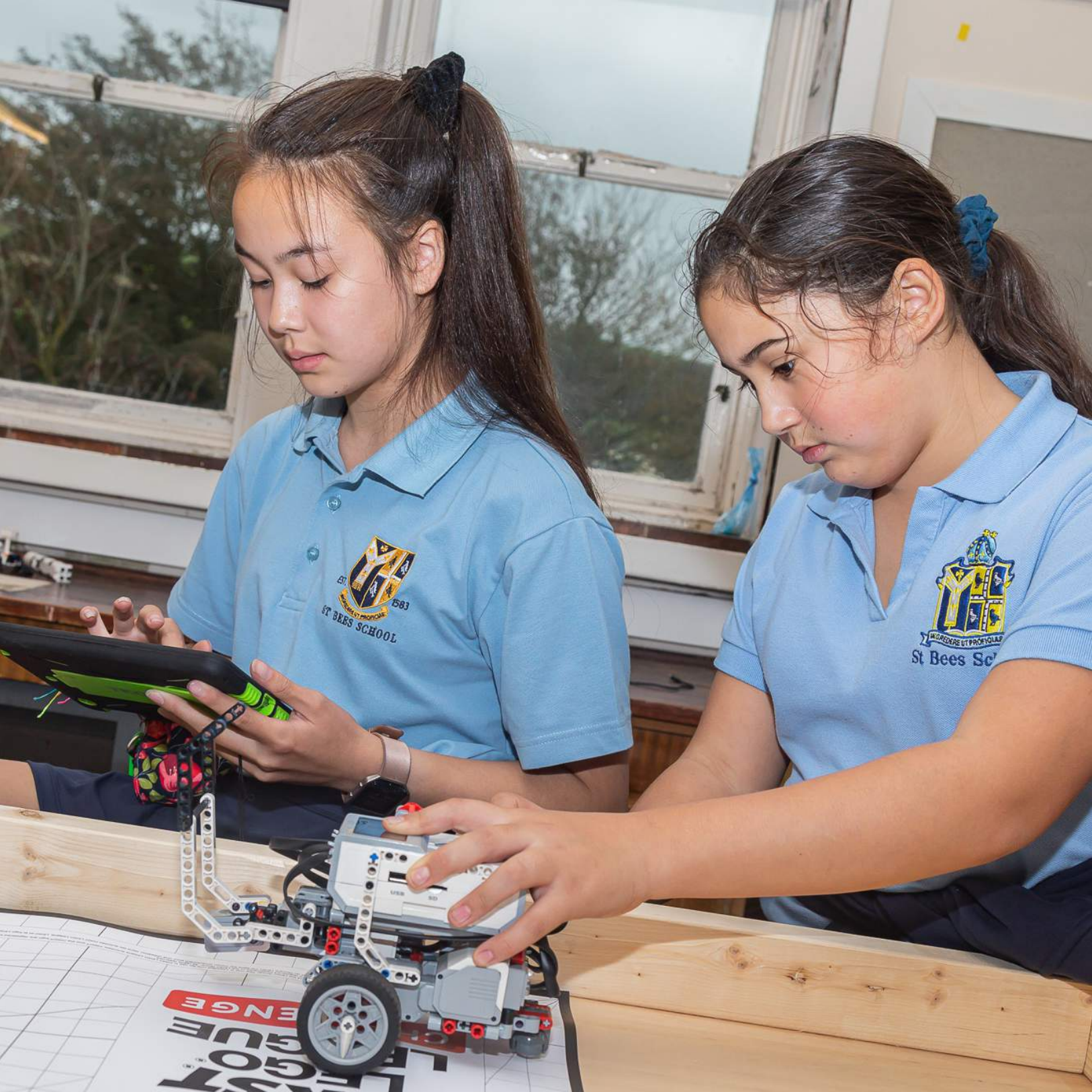
1. DEVELOP MOTOR SKILLS

Lego promotes fine motor skills and children practice dexterity as they connect Lego pieces of different shape and sizes. This requires different amounts of pressure to assemble and in turn supports children in pressure control while writing.

2. TEAMWORK

Through playing with Lego children learn how to share especially in working together on Lego construction. Children have to follow each other's lead and begin to understand how different ideas can contribute and extend their play. On top of this, there is also the added benefit of learning to negotiate roles and responsibilities while having an enjoyable social experience. Teamwork starts now and Lego only helps to improve this.





LEGO IN EDUCATION

3. CREATIVITY

Creativity is improved as children use various shapes, colours and sizes of Lego to construct designs from a police station, to a bridge, to an aeroplane. Creativity and imagination is fostered when children have no limitations to what they can make.

4. PROBLEM SOLVING

Following instructions to assemble Lego has lots of benefits for problem solving, focus and attention to detail. Symmetry balance, shapes and sizes are explored during play with Lego. As a result of this exposure to Maths, children work with fractions as they observe how many of the small pieces can fit into the large pieces. This can ultimately lead to problem solving and experiments with division.

5. COMMUNICATION

Communication skills are vital to development and Lego is a great way to engage in meaningful and fun conversations. Commenting and learning from their Lego creations, children can develop their communication skills including the ability to explain and explore ideas, describe their work and verbalise any challenges they had.

LEGO IN EDUCATION

6. PERSERVERANCE

Persistence is key in many aspects of life and working with Lego helps develop this. Everyone has seen a carefully constructed tower fall over and scatter into a hundred pieces. Lego teaches a child the importance of persisting with a task to see a vision come to life. Lego encourages children to have a go take their time and persevere.

7. CONFIDENCE

Self-esteem is a huge part of life and using Lego to create a final product that has followed a child's vision can be challenging. Achieving this task will hold a great sense of satisfaction which is obvious in a child's face when they proudly show off their completed work with a huge grin on their face.

8. PLANNING

Finally, following Lego instructions can be challenging and test anyone's patience. However it helps children develop planning skills and lateral thinking.





WHY ST BEES?

LEGO can be enjoyed anywhere, so what makes St Bees different? Aside from being one of the safest and most beautiful parts of the country, this programme offers something unique...

St Bees is located on the fringe of the UNESCO World Heritage Lake District National Park. Within a small coastal village, through STEAM and LEGO, we bring the outdoors in and take the indoors out.

The stunning red rocks on St Bees beach, just five minutes from our door, allow the children to be inspired by their environment. The robots can be coded to search for certain flora and fauna. The mountains can be used to aid navigation. The beach creates the perfect 'out of this world' terrain... the possibilities are endless!

WE HAVE A NURTURING BOARDING COMMUNITY

Boarding life is fundamental in providing the true St Bees experience. Especially within **ACTIVE-8**.

Within the cultural melting pot of our newly refurbished School House, global awareness lives and breathes everywhere.

Rooms are either single, double or triples, furnished to an incredibly high standard and provide a comfortable and welcoming second home — a true home-from-home.

In the evenings, children engage in a variety of stimulating and exciting activities to enrich their St Bees experience even more.







A TYPICAL DAY

Learning and fun are best combined with challenges, and this is what **ACTIVE-8** is all about.

Each day, children will complete challenges which contribute to the overarching theme of the environment.

Each challenge will be centred round a STEAM strand and will be conducted with the enquiry-based, child-led philosophy in mind.

Throughout the week, children will be working independently and as part of varying size groups, to complete a workbook. Each activity and challenge will require reflection on each of the key learning points, which will be academic (STEAM) and social skills.

This workbook will also include a diary/journal, in which, children will be required to reflect on their individual learning experiences and the progress they have made.

Vocabulary and the development of language will also be another focus. Opportunities for children to develop their command of both written and spoken languages will be continuously embedded throughout each day for both English and International students. This raises further potential for the benefits of the summer programme to continue far beyond the student's stay at St. Bees.

There are endless prospects for children to remain in contact with each other and communicate as friends, alongside the potential for students to remain in contact with St Bees to develop further links in future.

THE CORE STRUCTURE

Each day will consist of:

A Morning Lesson - This will prepare students for the activities and challenges that will be on offer that day. This will most commonly include: an introduction to key vocabulary; a discussion around what skills they may be required to use; and what learning outcomes will result.

A Challenge – A task which contributes to the overall theme (environmental awareness, Lego, outer space etc) and is focussed on STEAM objectives and outcomes.

An Activity – A range of fun learning experiences, such as forest schooling, which focus on children's personal and interpersonal development, alongside STEAM outcomes.

Curiosity Club – An evening lesson structured to further immerse International students in UK culture and give them a further insight into the UK in general and the English language.

Evening Activities – Each evening, children will be given a choice of two activities. This will normally be either watching a movie or playing a sport.





WE LOOK FORWARD TO HEARING FROM YOU

Here at St Bees, we don't offer just ordinary
Holiday Programmes.

We want to create programmes that are bespoke, unique and
fit your needs. That's why we'd love to talk more to you about
what we can offer alongside **ACTIVE-8**.

Just get in touch:



香港區招生代理: www.lklhk.com

查詢: +852 35948515/ +852 35979373

Student Recruitment Agent-HK Region: education@lklhk.com

Enquiry: +852 61104813 (Whatsapp/Wechat)

LKL INTERNATIONAL CONSULTING COMPANY (HONG KONG) LIMITED

樂意仕國際移民升學顧問(香港)有限公司

Room 504,5/F, Kenbo Commercial Building, 335-339 Queen's Road West Hong Kong

香港皇后大道西 335-339 號崑保商業大廈 5 樓 504 室

DON'T JUST TAKE OUR WORD FOR IT...

... we're not the only ones incredibly proud to be part of St Bees. We listen, we react and we thrive on feedback.

This [St Bees School] programme is SO much more than I had hoped for. It has definitely had a significant positive impact in his development.

Parent

* * * * *

I loved coming to St Bees during the summer and making dens, building my own fire and doing recycling on the beach.

Student

* * * * *

I am so proud to be associated with St Bees and be able to take part in such an incredible, innovative and forward-thinking programme. I just can't stop playing with the LEGO!

Teacher



#StartYourSummer...today

WE ARE READY TO WELCOME YOU



1 Main Entrance and Foundation

2 Swimming Pool and Eton Fives

3 Sports Pitches

4 Science Block

5 Business Management Centre

6 School House

7 Sports Centre

8 Priory

9 Train Station

#IAm...

... an ACTIVE-8 student



香港區招生代理: www.lklhk.com 查詢: +852 35948515/ +852 35979373
Student Recruitment Agent-HK Region: education@lklhk.com Enquiry: +852 61104813 (Whatsapp/Wechat)

LKL INTERNATIONAL CONSULTING COMPANY (HONG KONG) LIMITED

樂意仕國際移民升學顧問(香港)有限公司

Room 504,5/F, Kenbo Commercial Building, 335-339 Queen's Road West Hong Kong
香港皇后大道西 335-339 號崑保商業大廈 5 樓 504 室

St Bees School

Wood Lane

St Bees

Cumbria

CA27 0DS

A member of the FULL CIRCLE EDUCATION GROUP